

CLIQUE SIZEGUIDE

Chest (1)

Measure broadest part of chest up under the arms.

Waist (2)

Measure around your natural waistline. Keep tape measure a little loose.

Hip (3)

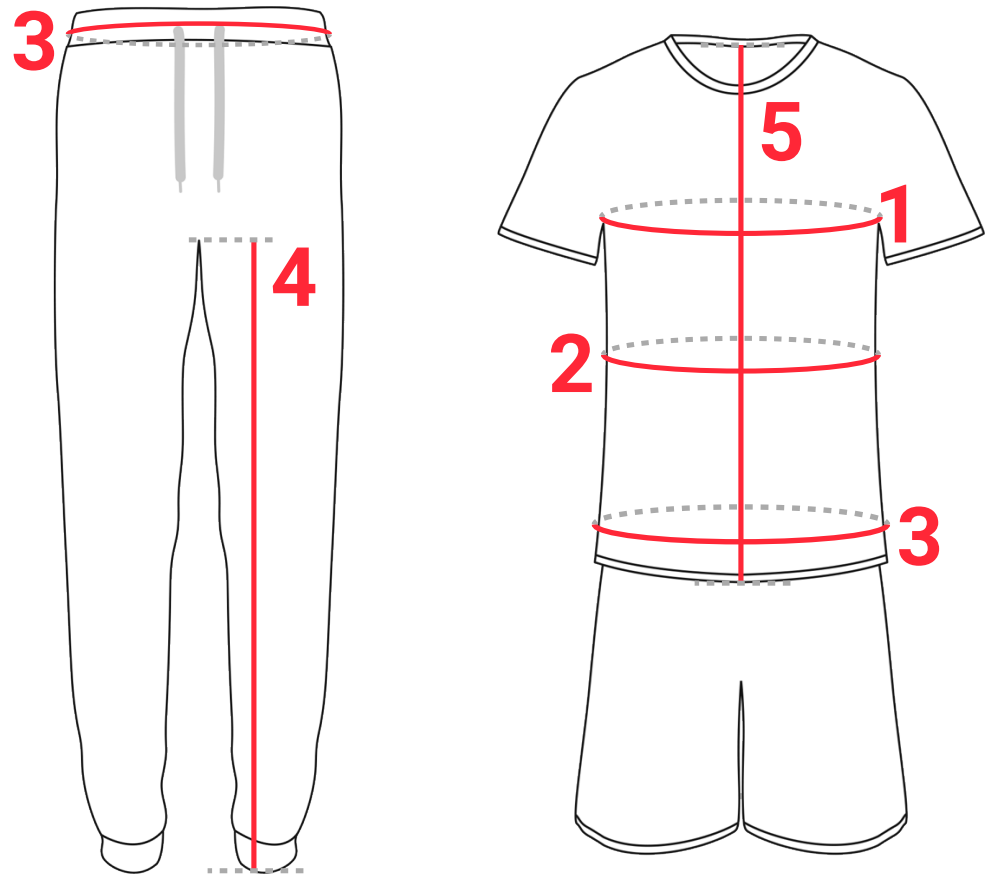
Measure hip at broadest part while keeping heels together.

Inseam length (4)

Measure from crotch to bottom of leg.

Torso length (5)

Measure from the hips to bottom the clavicle.



Men / Herre

Sizes	S	M	L	XL	2XL	3XL	4XL
Chest (1)	88-92 cm	96-100 cm	104-108 cm	112-116 cm	120-124 cm	128-132 cm	136-140 cm
Waist (2)	76-80 cm	84-88 cm	92-96 cm	100-104 cm	108-112 cm	116-120 cm	124-128 cm
Hips (3)	92-96 cm	100-104 cm	108-112 cm	116-120 cm	124-128 cm	132-136 cm	140-144 cm
Inseam length (4)	80 cm	82 cm	84 cm	86 cm	88 cm	90 cm	92 cm

Dame / Woman

Sizes	XS	S	M	L	XL	XXL - 3XL
Bust (1)	76-80 cm	84-88 cm	92-96 cm	100-104 cm	110-116 cm	122-128 cm
Waist (2)	60-64 cm	68-72 cm	76-80 cm	84-88 cm	94-100 cm	106-112 cm
Hips (3)	84-88 cm	92-96 cm	100-104 cm	108-112 cm	117-122 cm	127-132 cm
Inseam length (4)	79 cm	79 cm	79 cm	80 cm	80 cm	80 cm

Børn / Kids

Sizes	90/100	110/120	130/140	150/160
Chest (1)	45 cm	50 cm	55 cm	60 cm
Torso Length (5)	34 cm	38 cm	42 cm	44 tcm
Hips (3)	48 cm	56 cm	64 cm	72 cm
Inseam length (4)	36 cm	39 cm	42 cm	45 cm